



# CREATE YOUR OWN FAIRIES



# DRAW YOUR OWN FAIRIES



**Design a fairy based on her personality!**

## Daffodil

Daffodil is a free spirit who loves to travel and embraces new experiences

### Likes:

- Exploring the outer reaches of the forest
- Feeling the ocean spray on her face
- Making friends with fairies from other communities

### Dislikes:

- Being bored
- Strong winds that prevent her from flying
- Lockdown



# DRAW YOUR OWN FAIRIES



**Design a fairy based on her personality!**

## Winkie

Winkie is the cheekiest of the fairies, she loves to use her magic to play tricks and make people laugh.

### Likes:

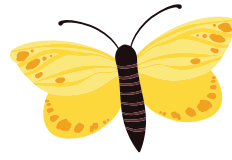
- Racing dragonflies through the rainforest
- Riding a swooping magpie
- Laughing with the Kookaburra

### Dislikes:

- Brushing her hair
- Sitting still
- Tidying up



# DRAW YOUR OWN FAIRIES



**Design a fairy based on her personality!**



## Bluebell

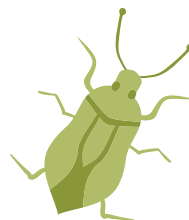
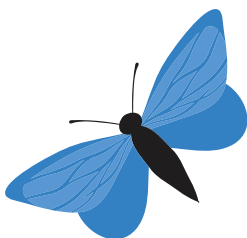
Bluebell is a healer, making potions from flower petals and nursing the animals of the forest back to health

### Likes:

- Tending to her herb garden
- A gentle summer breeze
- Sowing new flower crops in the moonlight

### Dislikes:

- Loud voices that disturb her patients
- Possums eating her produce
- Tatiana sneaking up on her and giving her a fright



# DRAW YOUR OWN FAIRIES



**Design a fairy based on her personality!**

## Silky



Silky is a fairy princess, in line to be fairy queen of the Otway fores.

### Likes:

- Watching shooting stars from the treetops
- The delicate scent of rose myrtle
- Listening to stories of her fairy ancestors

### Dislikes:

- Snakes
- Thunder and Lightening
- When others focus on her beauty over her brain

